

SHEET NOTES

PLANTING NOTES

- IF DISCREPANCIES EXIST BETWEEN THE NUMBER OF PLANTS DRAWN ON THE PLANTING PLAN AND THE NUMBER OF PLANTS IN THE PLANT LIST, THE PLANTING PLAN SHALL GOVERN.
- ALL NEW PLANT MATERIAL SHALL CONFORM TO THE MINIMUM GUIDELINES ESTABLISHED FOR NURSERY STOCK PUBLISHED BY THE AMERICAN ASSOCIATION OF NURSERYMEN, INC. IN ADDITION, ALL NEW PLANT MATERIAL FOR THE PROJECT SHALL BE OF SPECIMEN QUALITY.
- ALL NEW PLANTS TO BE BALLED AND BURLAPPED OR CONTAINER-GROWN, UNLESS OTHERWISE NOTED ON THE PLANT LIST.
- THE CONTRACTOR SHALL SUPPLY ALL NEW PLANT MATERIAL IN QUANTITIES SUFFICIENT TO COMPLETE THE PLANTING SHOWN ON THE DRAWINGS.
- ANY PROPOSED SUBSTITUTIONS OF PLANT SPECIES SHALL BE MADE WITH PLANTS OF EQUIVALENT OVERALL FORM, HEIGHT, BRANCHING HABIT, FLOWER, LEAF, COLOR, FRUIT AND CULTURE, AND ONLY AFTER WRITTEN APPROVAL OF THE LANDSCAPE ARCHITECT.
- ALL NEW PLANTS SHALL BE TAGGED AND APPROVED BY THE LANDSCAPE ARCHITECT AT THE NURSERY PRIOR TO DIGGING OR DELIVERY TO THE SITE.
- CONTRACTOR SHALL LOCATE AND VERIFY ALL EXISTING UTILITY LINES PRIOR TO PLANTING AND SHALL REPORT ANY CONFLICTS TO THE LANDSCAPE ARCHITECT.
- STAKE LOCATION OF ALL PROPOSED PLANTING FOR APPROVAL BY LANDSCAPE ARCHITECT PRIOR TO THE COMMENCEMENT OF PLANTING.
- ALL PLANT BEDS TO RECEIVE TWO INCHES (2") OF BARK MULCH AS PER SPECIFICATIONS.
- CONTRACTOR SHALL PROVIDE FULL DEPTHS OF LOAM AS NOTED ON DETAILS AND AS SPECIFIED, FOR ALL PROPOSED PLANTING. SEE SHEET L7.20 AND SPECIFICATIONS FOR SOIL DEPTHS AND PLANT INSTALLATION.
- ALL PROPOSED PLANTING AREAS ARE TO RECEIVE IRRIGATION APPROPRIATE FOR PLANT TYPE, DESIGN AND LAYOUT TO BE DETERMINED BY IRRIGATION CONSULTANT IN DESIGN DEVELOPMENT PHASE.

GENERAL NOTES

Date	Description
09/01/2021	CONSTRUCTION DOCUMENTS ISSUANCE

Seal / Signature

IQHQ Alewife Park

Alewife Park - IQHQ

20143

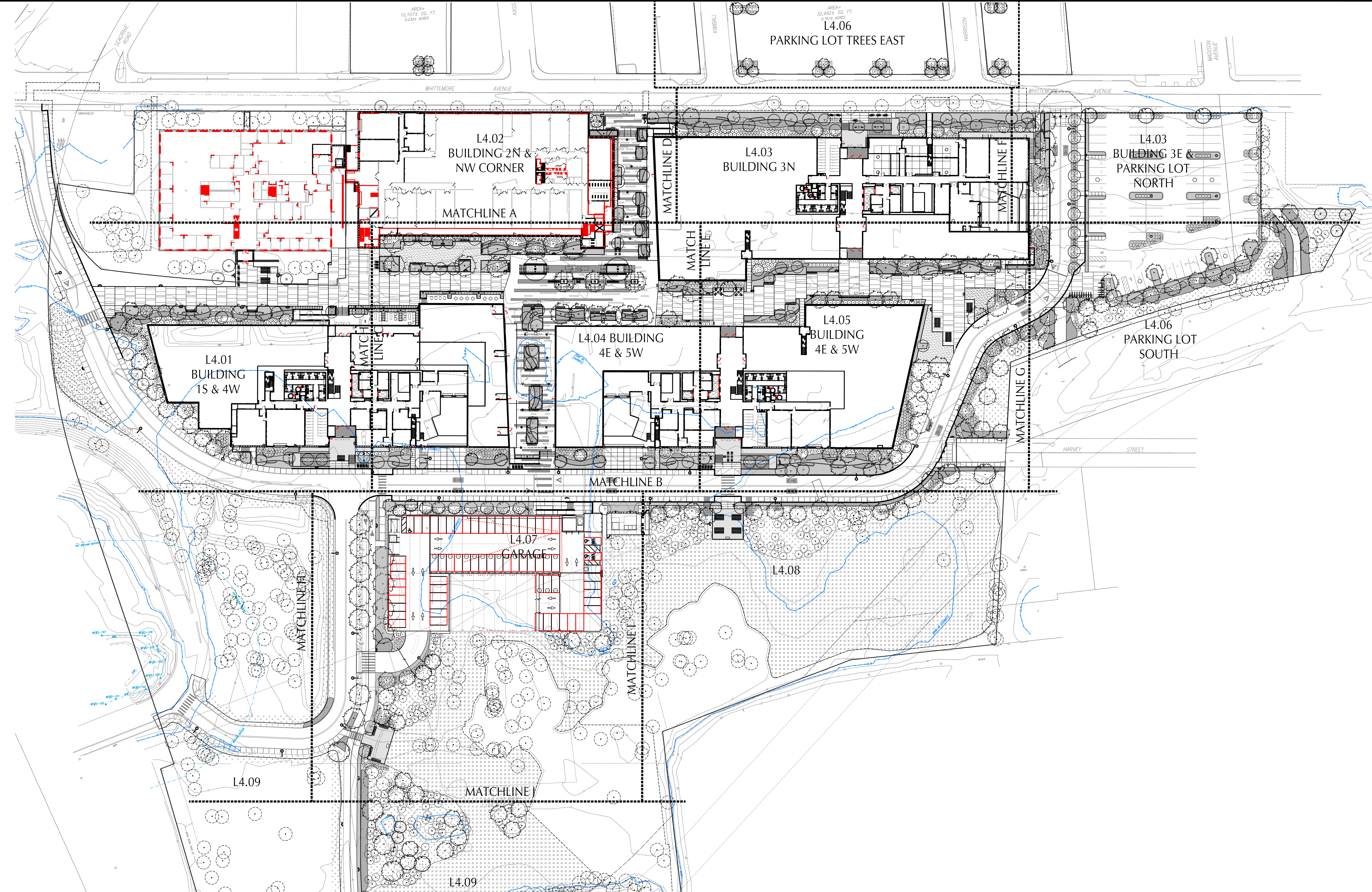
20143.00

Description

OVERALL PLANTING PLAN

Scale 1" = 40'-0"

Building ID Sheet
SITE L4.00



PLANTING SCHEDULE

SYM	QTY	BOTANICAL NAME	COMMON NAME	SIZE	COMMENTS
DECIDUOUS SHADE TREES (257 TOTAL)					
AF	17	Acer x freemanii 'Autumn Blaze'	Autumn Blaze Freeman Maple	4"-4 1/2" CAL.	2" LOWEST BRANCH, SPRING PLANT
AR	9	Acer rubrum 'October Glory'	October Glory Red Maple (small)	3"-3 1/2" CAL.	2" LOWEST BRANCH, SPRING PLANT
ARI	36	Acer rubrum 'Armstrong'	Armstrong Red Maple (upright)	3"-3 1/2" CAL.	2" LOWEST BRANCH, SPRING PLANT
AR2	11	Acer rubrum 'Armstrong'	Armstrong Red Maple (upright)	1"-1 1/2" CAL.	
CO	6	Carya ovata	Shagbark Hickory	3"-3 1/2" CAL.	
FG3	3	Fagus grandifolia	American Beech	3"-3 1/2" CAL.	2" LOWEST BRANCH, SPRING PLANT
FG2	9	Fagus grandifolia	American Beech	1"-1 1/2" CAL.	SPRING PLANT
GB	15	Ginkgo biloba 'Princeton Sentry'	Princeton Sentry Maidenhair Tree	3"-3 1/2" CAL.	2" LOWEST BRANCH
GT	22	Gleditsia triacanthos var. 'Inermis 'Dawns'	Street Keeper Honeylocust (upright)	4"-4 1/2" CAL.	2" LOWEST BRANCH
LST	11	Liquidambar styraciflua	Sweetgum	3"-3 1/2" CAL.	2" LOWEST BRANCH
NS	6	Nyssa sylvatica 'Wildfire'	Wildfire Tupelo	3"-3 1/2" CAL.	2" LOWEST BRANCH
NS2	35	Nyssa sylvatica 'Wildfire'	Wildfire Tupelo	1"-1 1/2" CAL.	
QA	1	Quercus alba	White Oak	3"-3 1/2" CAL.	
QB	7	Quercus bicolor	Sawpin White Oak	1 1/2"-4" CAL.	2" LOWEST BRANCH
QP	23	Quercus palustris	Pine Oak	1 1/2"-4" CAL.	2" LOWEST BRANCH
QR	20	Quercus prinus	Pine Oak	1"-1 1/2" CAL.	
QR	10	Quercus rubra	Northern Red Oak	1 1/2"-4" CAL.	2" LOWEST BRANCH
TA	12	Tilia americana	American Linden	3"-3 1/2" CAL.	2" LOWEST BRANCH
ORNAMENTAL TREES (349 TOTAL)					
AP	2	Acer palmatum 'Flora'	Flora Japanese Maple	3 1/2" HT.	B & B
AG	30	Aemilanchier x grandiflora 'Autumn Brilliance'	Autumn Brilliance Serviceberry	10"-12" HT.	3 TRUNKS MIN. / 5 MAX.
AG2	48	Aemilanchier x grandiflora 'Autumn Brilliance'	Autumn Brilliance Serviceberry	1"-1 1/2" CAL.	
BN	41	Betula nigra 'Heritage'	Heritage River Birch	12"-14" HT.	1 TRUNKS MIN. / 5 MAX. SPRING PLANT
BP	24	Betula pendula	Silver Birch	3"-3 1/2" CAL.	SINGLE STEM, SPRING PLANT
CC	16	Cercis canadensis 'Tennessee Pink'	Tennessee Pink Eastern Redbud	2"-2 1/2" CAL.	SINGLE STEM, SPRING PLANT
CC2	63	Cercis canadensis 'Tennessee Pink'	Tennessee Pink Eastern Redbud	1"-1 1/2" CAL.	SINGLE STEM, SPRING PLANT
CCA	13	Carpinus caroliniana	American Hornbeam	2 1/2"-3" CAL.	SINGLE STEM, SPRING PLANT
CF	19	Comus florida	Flowering Dogwood	2"-2 1/2" CAL.	SINGLE STEM, SPRING PLANT
CFR	4	Comus florida var. 'rubra'	Flowering Red Dogwood	2"-2 1/2" CAL.	SINGLE STEM, SPRING PLANT
PP	46	Prunus pennsylvanica	Pink Cherry	1"-1 1/2" CAL.	SINGLE STEM, SPRING PLANT
PK	2	Prunus serotina 'Kwanan'	Kwanan Flowering Cherry	4" CAL.	2" LOWEST BRANCH, SPRING PLANT
PI	3	Prunus virginiana	Chokeberry	3"-3 1/2" CAL.	SINGLE STEM, SPRING PLANT
SR	12	Syringa reticulata 'Ivory Silk'	Ivory Silk Japanese Tree Lilac	2"-2 1/2" CAL.	SINGLE STEM, UPRIGHT FORM

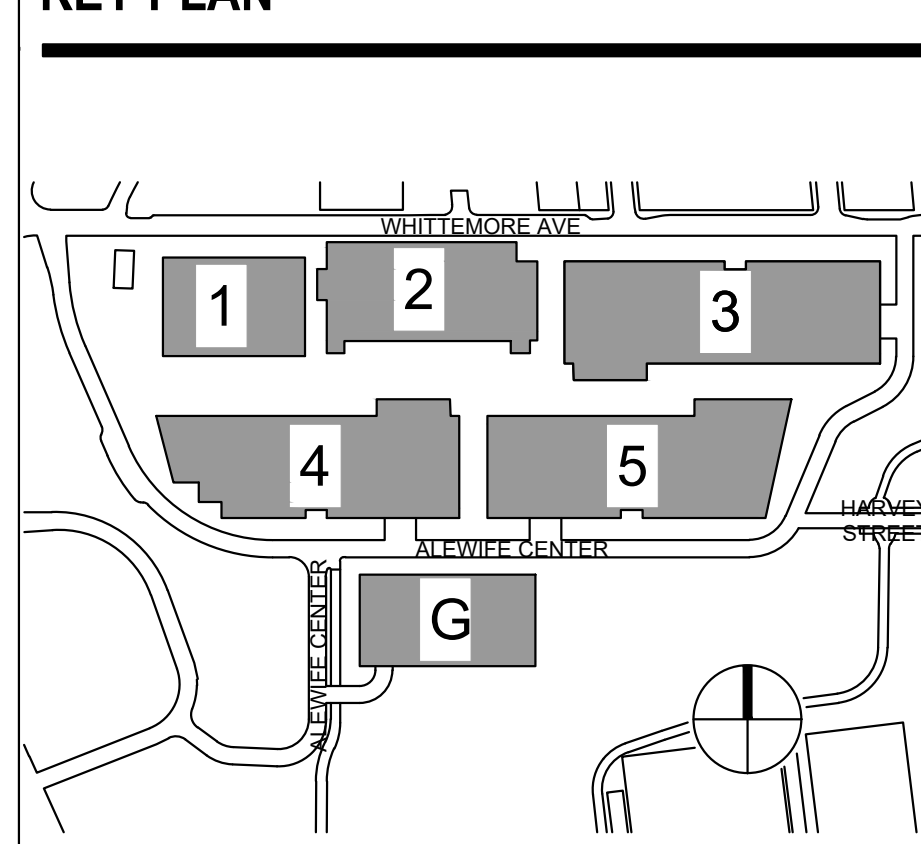
SYM	QTY	BOTANICAL NAME	COMMON NAME	SIZE	COMMENTS
EVERGREEN TREES (5 TOTAL)					
JV	2	Juniperus virginiana	Eastern Red Cedar	8-10' HT.	
PS	3	Pinus strobus	Eastern White Pine	8-10' HT.	
SHRUBS (2,577 TOTAL)					
AM	36	Aronia melanocarpa 'Wotona'	Wotona Beauty Chokeberry (dwarf)	18"-24" HT.	36" O.C. SPACING
CA	374	Celastrus albidus 'Hammington'	Hammington Summerweet	24"-30" HT.	36" O.C. SPACING
CS	24	Cornus sericea 'Arctic Fire'	Arctic Fire Dogwood	24"-30" HT.	36" O.C. SPACING
FG	8	Fothergilla gardenii	Dwarf White alder	12"-18" HT.	36" O.C. SPACING
HM	9	Hamelis virginiana	Common Witchhazel	5'-6' HT.	
HQ	128	Hydrangea quercifolia 'Ruby Slippers'	Ruby Slippers Oakleaf Hydrangea	3'-4' HT.	48" O.C. SPACING
IG	467	Ilex glabra 'Shamrock'	Shamrock Holly	24"-30" HT.	36" O.C. SPACING
IV	107	Ilex verticillata 'Red Sprite'	Red Sprite Winterberry (female)	24"-30" HT.	36" O.C. SPACING
IV2	17	Ilex verticillata 'Jim Dandy'	Jim Dandy Winterberry (male)	24"-30" HT.	36" O.C. SPACING
IVH	69	Ilex virginica 'Henry's Garnet'	Henry's Garnet Sweetgum	18"-24" HT.	36" O.C. SPACING
KL	128	Kalmia latifolia 'Hoffman's Pink'	Hoffman's Pink Mountain Laurel	30"-36" HT.	36" O.C. SPACING
LB	75	Lindera borealis	Spicebush	3'-4' HT.	48" O.C. SPACING
LV	56	Leucothoe fontinaliana	Drooping Leucothoe	3'-4' HT.	36" O.C. SPACING
MP	53	Myrica pensylvanica	Northern Bayberry	3'-4' HT.	3" O.C. SPACING
RA	727	Rhus aromatica 'Gro-low'	Gro-low Fragrant Sumac	12"-15" HT.	36" O.C. SPACING
RV	89	Rosa virginiana	Virginia Rose	18"-24" HT.	36" O.C. SPACING
RVI	70	Rhododendron vicicorum	Swain Azalea	3'-4' HT.	48" O.C. SPACING
SC	39	Sambucus canadensis	American Elderberry	4'-6' HT.	48" O.C. SPACING
VC	24	Vaccinium corymbosum	Highbush Blueberry	24"-30" HT.	36" O.C. SPACING
VD	89	Viburnum dentatum	Aronwood Viburnum	3'-4' HT.	48" O.C. SPACING

NOTE:
IN ADDITION TO THE TREES LISTED IN THE PLANT LIST 150 SMALL BARE ROOT TREES, RANGING IN SIZE FROM 2'-4" TALL, WILL BE PLANTED UNDER THE 1 1/2" CALIBER TREES, OR AS LOCATED IN THE FIELD BY THE CLIENT'S REPRESENTATIVE, WITHIN THE 4-ACRE AREA SOUTH AND EAST OF THE GARAGE. SPECIES WILL BE SELECTED AT A LATER DATE AS DETERMINED BY AVAILABILITY, BUT ARE TO BE LIMITED TO NATIVE TREES, AS SELECTED BY LANDSCAPE ARCHITECT.

PLANTING LEGEND

SYMBOL	DESCRIPTION
(Circle with dot)	EXISTING TREE TO REMAIN - SEE SHEET L0.01
(Circle with cross)	DECIDUOUS SHADE OR UPRIGHT / COLUMNAR TREE
(Circle with vertical line)	EVERGREEN TREE
(Circle with horizontal line)	MULTI-STEM ORNAMENTAL TREE
(Circle with diagonal line)	FLOWERING ORNAMENTAL TREE
(Circle with horizontal dashed line)	1 1/2" CALIBER TREE
(Square with diagonal lines)	SYNTHETIC TURF
(Square with horizontal lines)	TURF GRASS
(Square with vertical lines)	MEADOW SEED MIX
(Square with diagonal dashed lines)	WOODLAND SEED MIX
(Square with horizontal dashed lines)	WET MEADOW SEED MIX

KEY PLAN



SHEET NOTES

GENERAL NOTES

Date	Description
09/01/2021	CONSTRUCTION DOCUMENTS ISSUANCE

Seal / Signature

IQHQ Alewife Park

Alewife Park - IQHQ

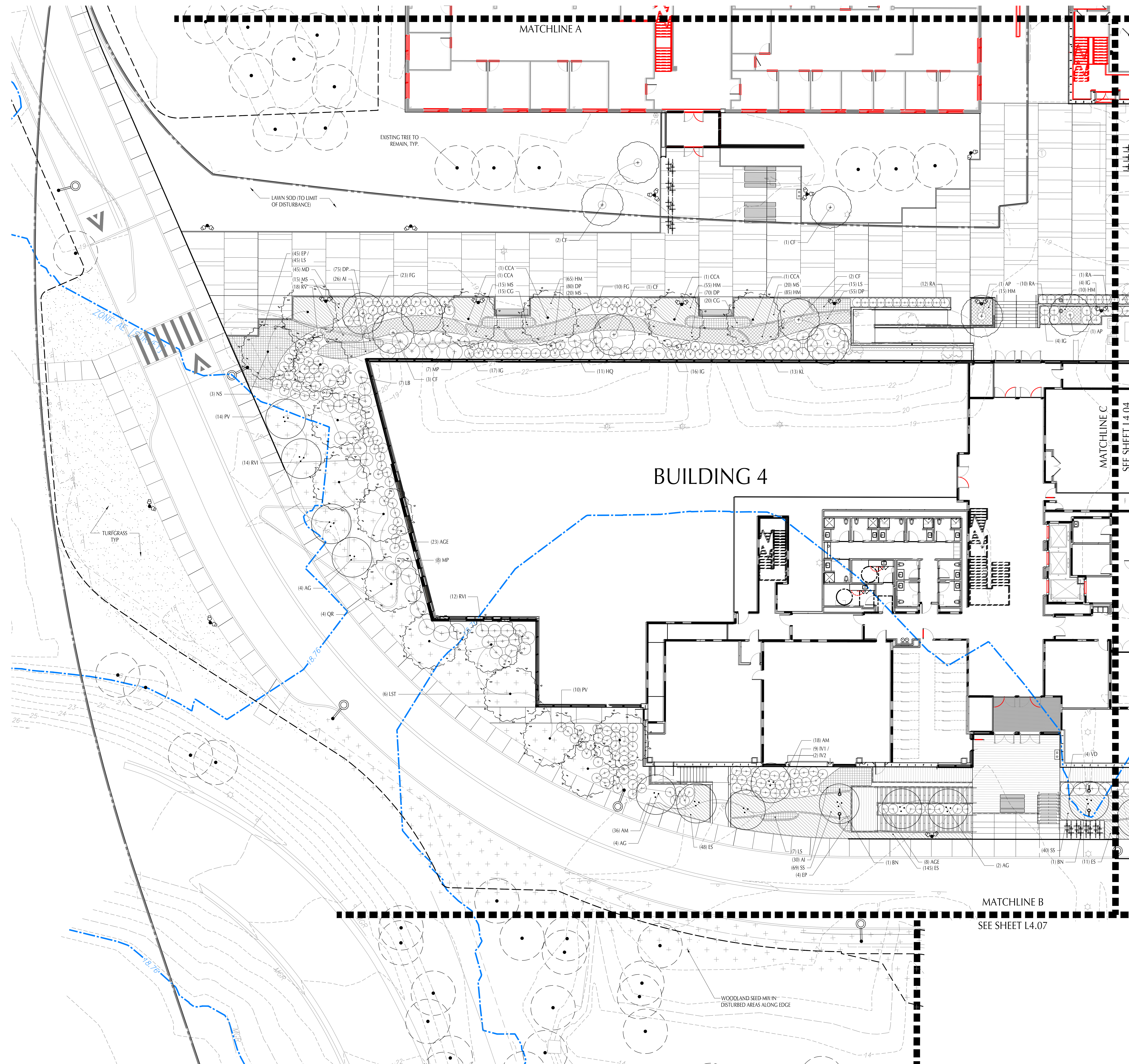
20143

11.7592.000

Description
PLANTING PLAN

Scale
1" = 10'-0"

Building ID | Sheet
SITE | **L4.01**



1 PROMENADE WEST
SCALE: 1" = 10'-0"

Gensler

One Beacon Street
Third Floor
Boston, MA 02108
United States

Tel: (617) 619-5700
Fax: (617) 619-5701

Structural Engineer
McNamara Salvia
101 Federal Street
Suite 1100
Boston, MA 02110
Tel: (617) 737-0040

Civil Engineer
Varasse Hansen Brustin, Inc.
99 High Street - 10th Floor
Boston, MA 02110
Tel: (617) 728-7777

MEP & Fire Protection
R.W. Sullivan Engineering
629 Main Street - Suite 203
Boston, MA 02129
Tel: (617) 523-8227

Building Enclosures
Simpson Gumpertz & Heger
482 Totten Pond Road
Waltham, MA 02451
Tel: (781) 907-8000

Geotechnical Engineer
Haley & Aldrich, Inc.
70 Blanchard Road, Suite 204
Burlington, MA 01803
Tel: (617) 898-1400

Life Safety
Cooke Reed
154 Turnpike Road - Suite 200
Southborough, MA 01772
Tel: (617) 920-7633

Landscape Architect
Shadley Associates
1730 Massachusetts Avenue
Lexington, MA 02420
Tel: (781) 652-8809

Parking Garage

Garage Structural Engineer
Simon Design Engineering
49 Walnut Park, Building #2
Wellesley, MA 02481
Tel: (978) 237-2226

Garage MEP & FP
e3s Engineers
137A Lewis Wharf
Boston, MA 02110
Tel: (617) 530-1104

SHEET NOTES

GENERAL NOTES

Date	Description
09/01/2021	CONSTRUCTION DOCUMENTS ISSUANCE

Seal / Signature

IQHQ Alewife Park

Alewife Park - IQHQ

20143

11.7592.000

Description
PLANTING PLAN

Scale

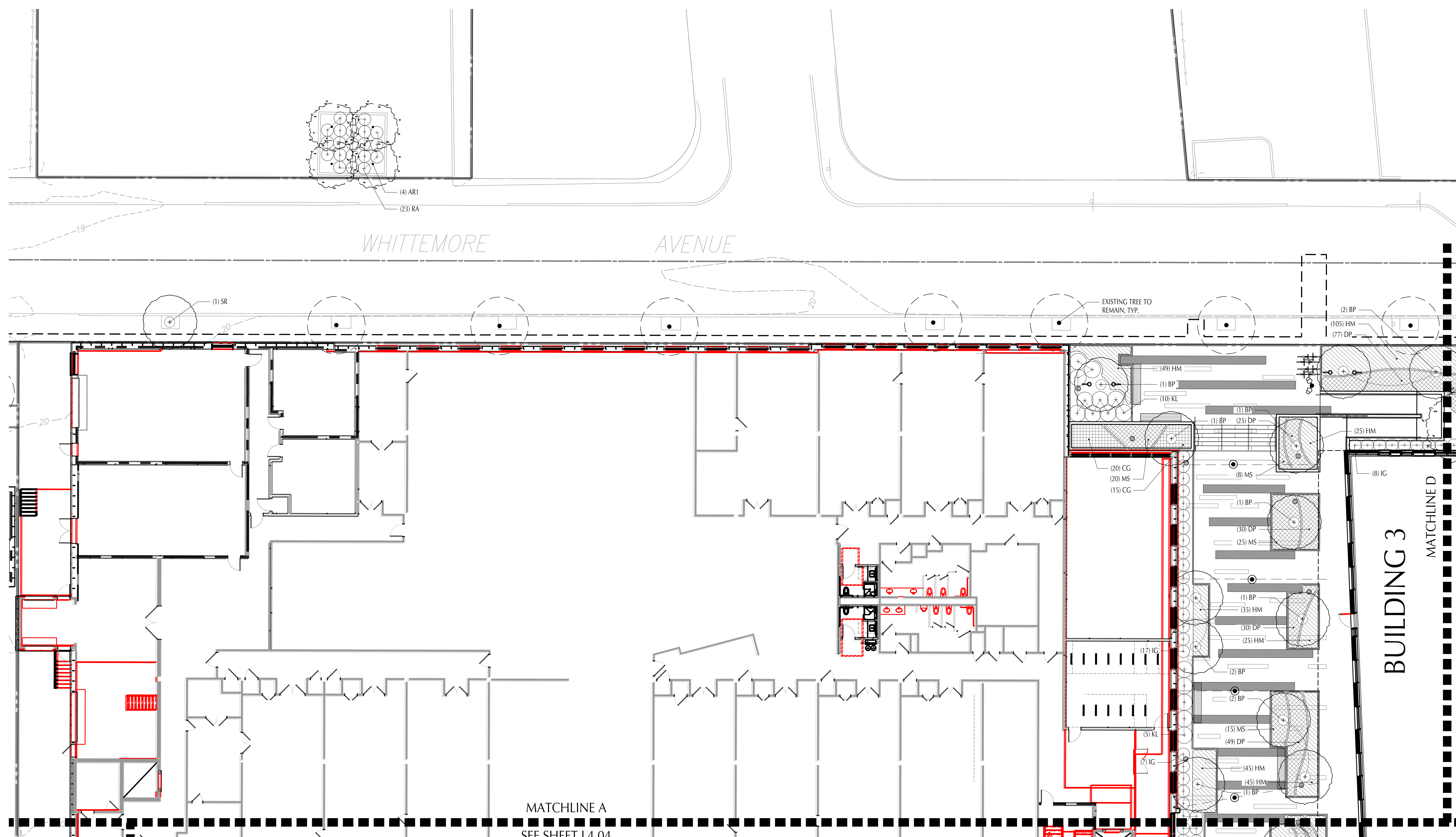
1" = 10'-0"

Building ID

SITE

Sheet

L4.02

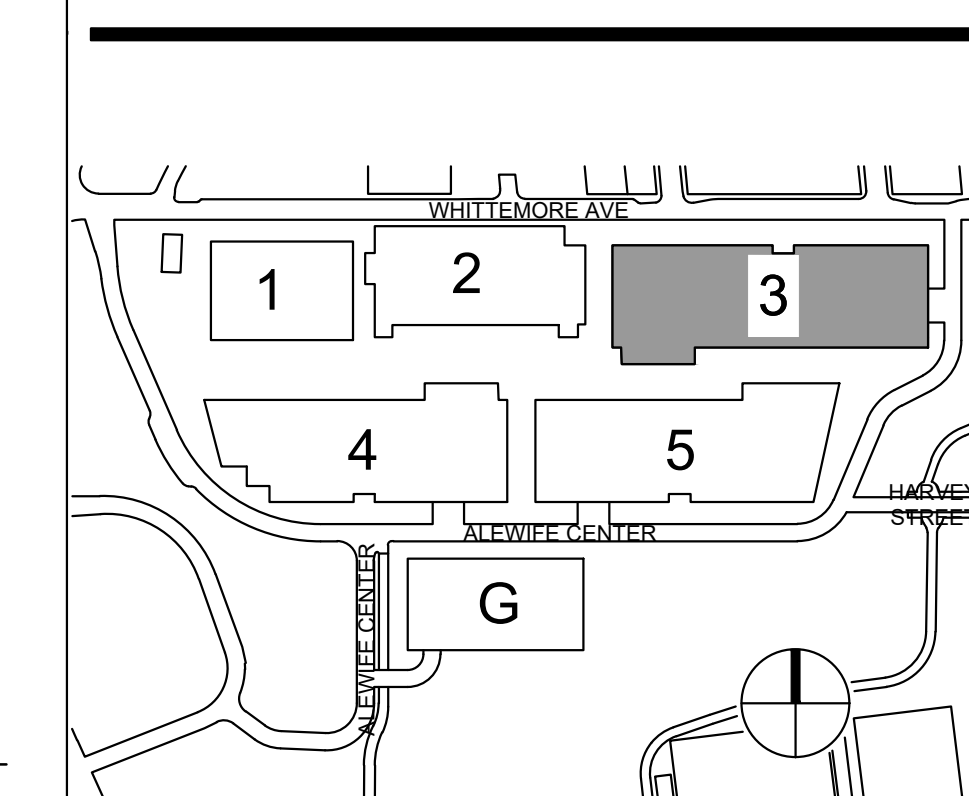


1 CAMPUS CENTER NORTH
SCALE: 1" = 10'-0"

MATCHLINE A
SEE SHEET L4.04

BUILDING 3
MATCHLINE D
SEE SHEET L4.03

KEY PLAN



Gensler

One Beacon Street
Third Floor
Boston, MA 02108
United States
Tel: (617) 619-5700
Fax: (617) 619-5701

Structural Engineer
McNamara Salvia
101 Federal Street
Suite 1100
Boston, MA 02110
Tel: (617) 737-0040

Civil Engineer
Varasse Hansen Bradin, Inc.
99 High Street - 10th Floor
Boston, MA 02110
Tel: (617) 728-7777

MEP & Fire Protection
R.W. Sullivan Engineering
629 Main Street - Suite 203
Boston, MA 02129
Tel: (617) 523-8227

Building Enclosures
Simpson Gumpertz & Heger
480 Forbes Road
Waltham, MA 02451
Tel: (781) 907-8000

Geotechnical Engineer
Haley & Aldrich, Inc.
70 Blanchard Road, Suite 204
Burlington, MA 01803
Tel: (617) 698-1400

Life Safety
Cooks Field
154 Turnpike Road - Suite 200
Southborough, MA 01772
Tel: (617) 500-7633

Landscape Architect
Shadley Associates
1730 Massachusetts Avenue
Leavington, MA 02420
Tel: (81) 652-8809

Parking Garage

Garage Structural Engineer
Simon Design Engineering
49 Walnut Park, Building #2
Wellesley, MA 02481
Tel: (81) 237-2226

Garage MEP & FP
e3s Engineers
137A Lewis Wharf
Boston, MA 02110
Tel: (617) 530-1104

SHEET NOTES

GENERAL NOTES

Date	Description
09/01/2021	CONSTRUCTION DOCUMENTS ISSUANCE

Seal / Signature

IQHQ Alewife Park

Alewife Park - IQHQ

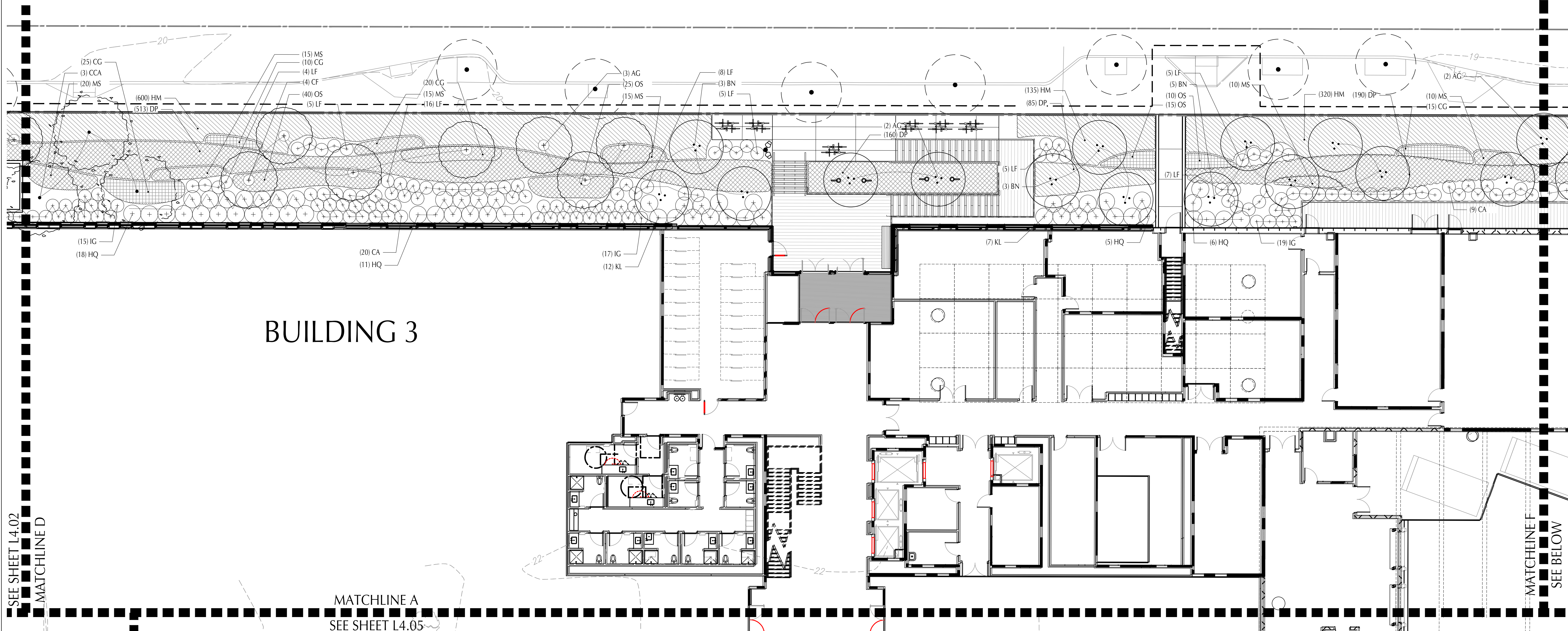
20143

11.7592.000

Description
PLANTING PLAN

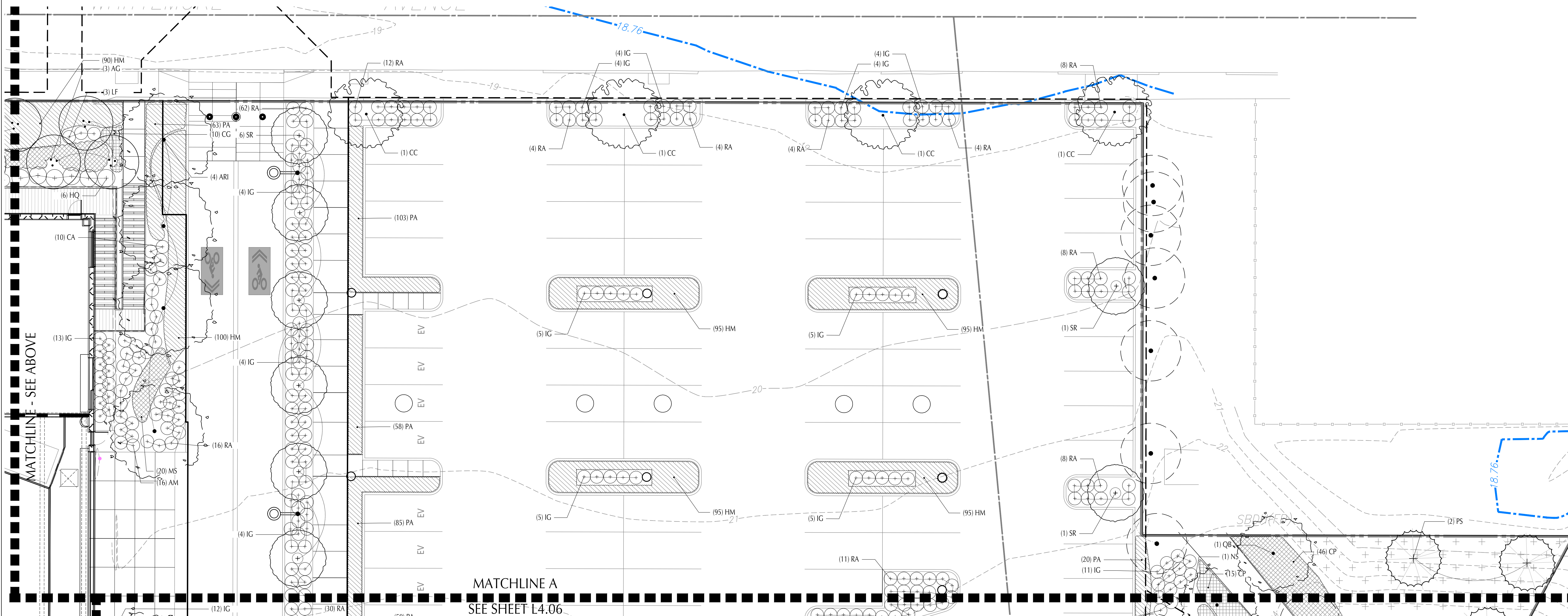
Scale
1" = 10'-0"

Building ID | Sheet
SITE | L4.03



1 WHITTEMORE AVENUE - BUILDING 3 NORTH

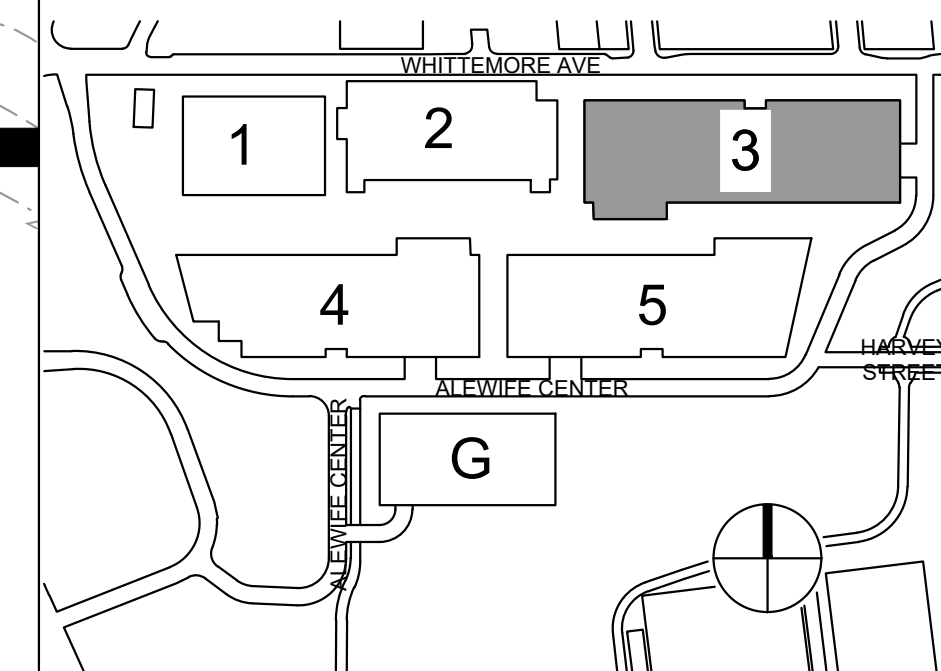
SCALE: 1" = 10'-0"



1 BUILDING 3 & PARKING LOT NORTH

SCALE: 1" = 10'-0"

KEY PLAN



SHEET NOTES

GENERAL NOTES

- SEE LEGEND L0.00 FOR ALL MATERIAL & PRODUCT INFORMATION.

Date	Description
09/01/2021	CONSTRUCTION DOCUMENTS ISSUANCE

Seal / Signature

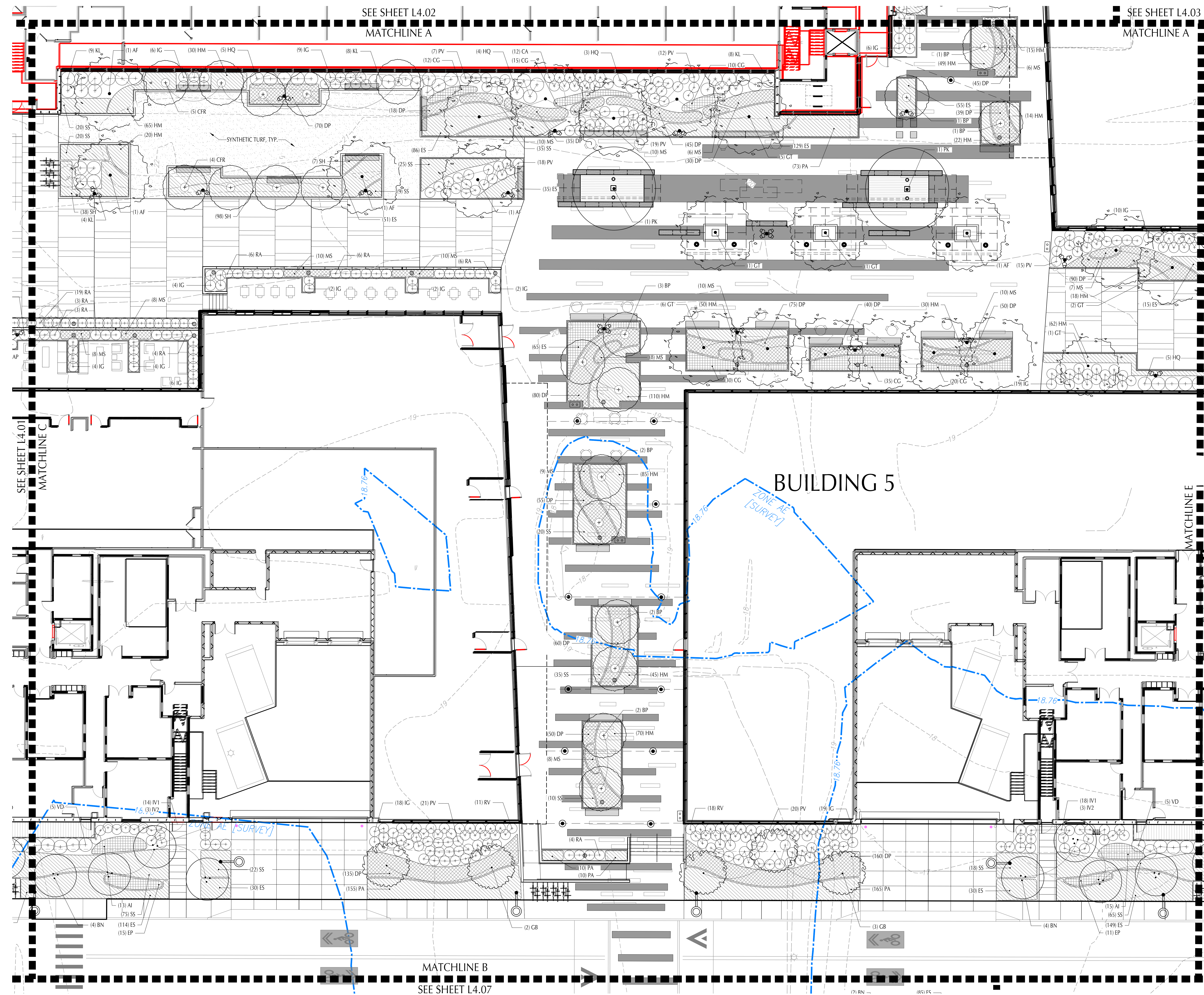
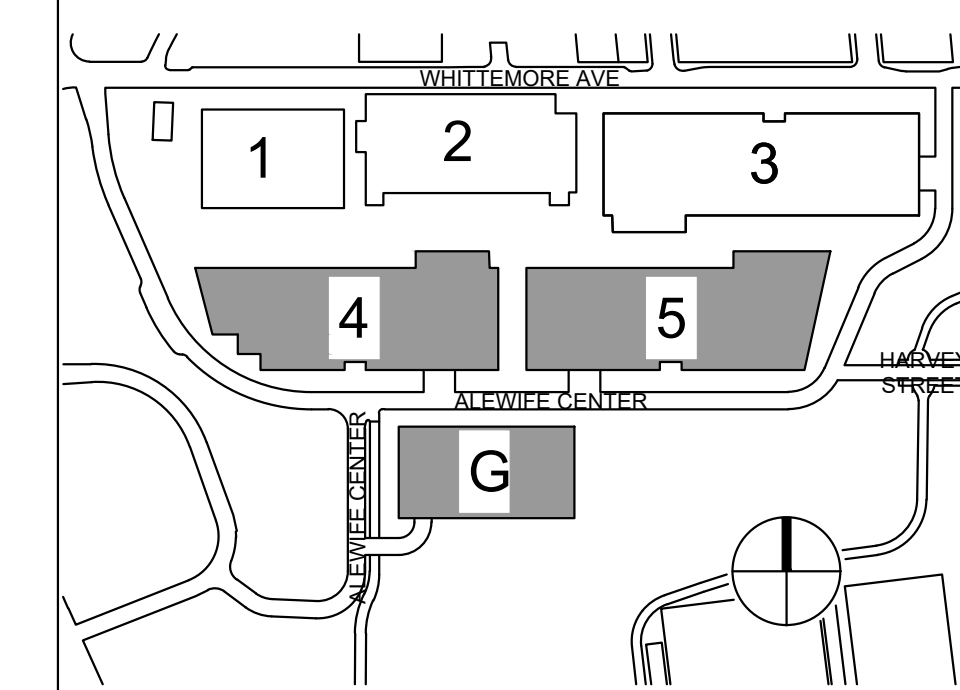
IQHQ Alewife Park
Alewife Park - IQHQ

20143
11.7592.000
Description
PLANTING PLAN

Scale
1" = 10'-0"

Building ID | Sheet
SITE | L4.04

KEY PLAN



SEE SHEET L4.02
MATCHLINE A

SEE SHEET L4.03
MATCHLINE A

SEE SHEET L4.01
MATCHLINE C

MATCHLINE E
SEE SHEET L4.05

MATCHLINE B
SEE SHEET L4.07

Gensler

One Beacon Street
Third Floor
Boston, MA 02108
United States
Tel: (617) 619-5700
Fax: (617) 619-5701

Structural Engineer
McNamara Salvia
101 Federal Street
Suite 1100
Boston, MA 02110
Tel: (617) 737-0040

Civil Engineer
Varesse Hansen Bradin, Inc.
99 High Street - 10th Floor
Boston, MA 02110
Tel: (617) 728-7777

MEP & Fire Protection
R.W. Sullivan Engineering
629 Main Street - Suite 203
Boston, MA 02129
Tel: (617) 523-8227

Building Enclosures
Simpson Gumpertz & Heger
480 Totten Pond Road
Waltham, MA 02451
Tel: (781) 907-8000

Geotechnical Engineer
Haley & Aldrich, Inc.
70 Blanchard Road, Suite 204
Burlington, MA 01803
Tel: (617) 898-1400

Life Safety
Cooks Field
154 Turnpike Road - Suite 200
Southborough, MA 01772
Tel: (617) 500-7633

Landscape Architect
Shadley Associates
1730 Massachusetts Avenue
Leavington, MA 02420
Tel: (818) 652-8809

Parking Garage

Garage Structural Engineer
Simon Design Engineering
49 Walnut Park, Building #2
Wellesley, MA 02481
Tel: (617) 237-2228

Garage MEP & FP
e3s Engineers
137A Lewis Wharf
Boston, MA 02110
Tel: (617) 530-1104

SHEET NOTES

GENERAL NOTES

Date	Description
09/01/2021	CONSTRUCTION DOCUMENTS ISSUANCE

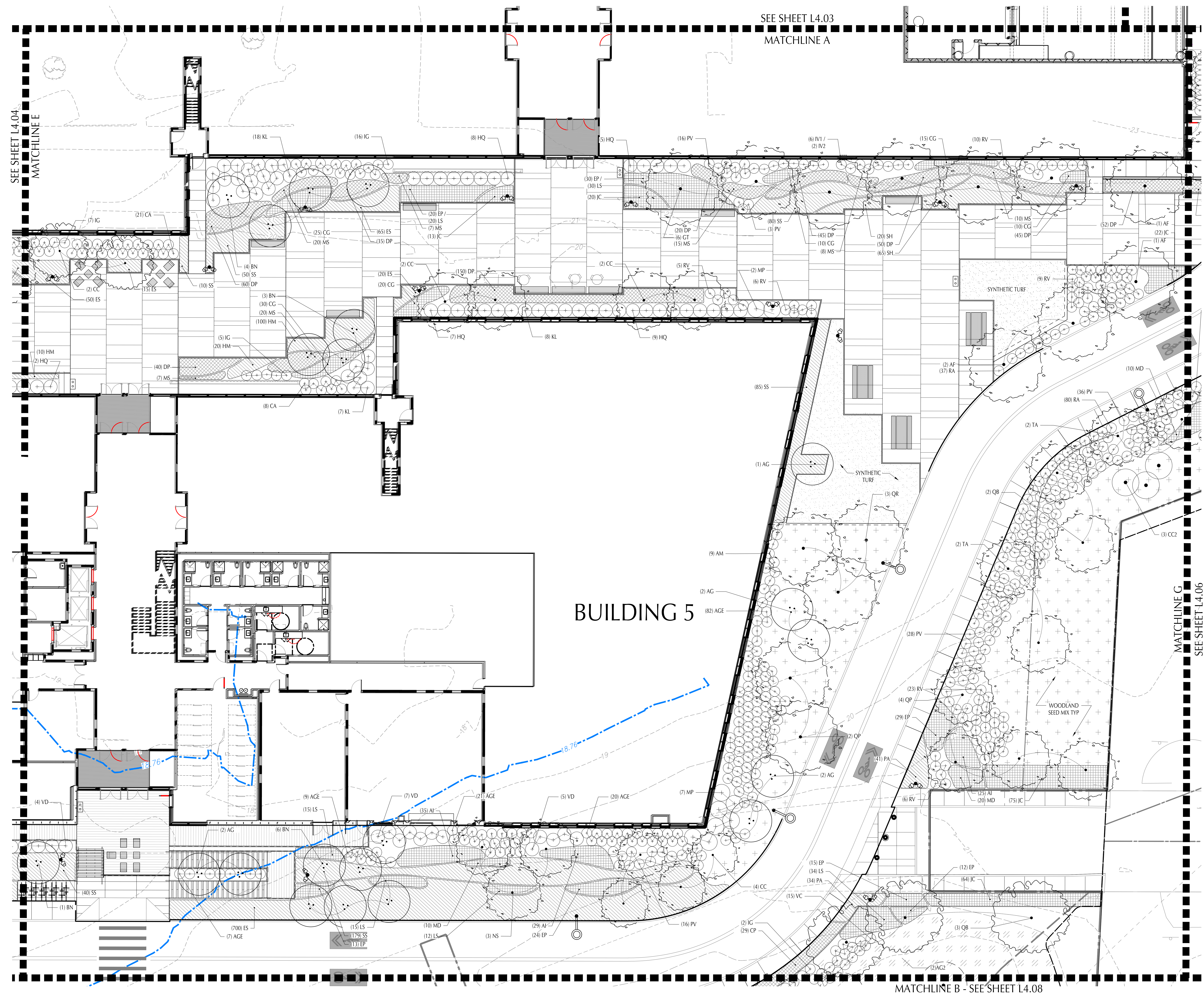
Seal / Signature

IQHQ Alewife Park
Alewife Park - IQHQ

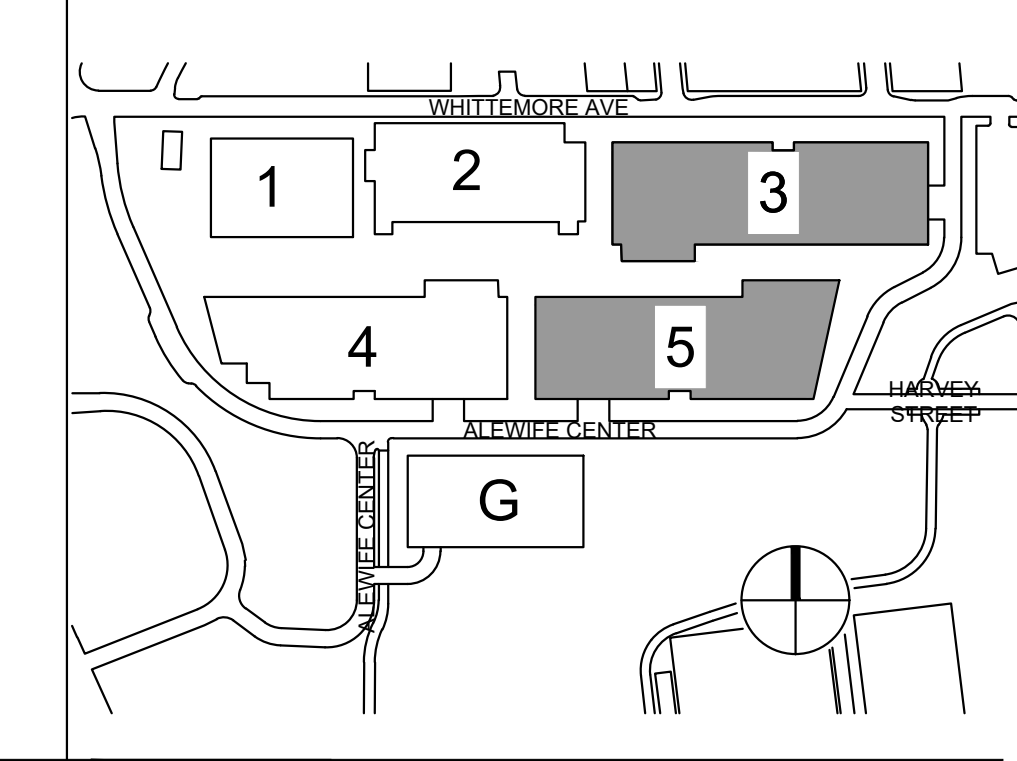
20143
11.7592.000
Description
PLANTING PLAN

Scale
1" = 10'-0"

Building ID | Sheet
SITE | L4.05



KEY PLAN



Gensler

One Beacon Street
Third Floor
Boston, MA 02108
United States
Tel: (617) 619-5700
Fax: (617) 619-5701

Structural Engineer
McNamara Salvia
101 Federal Street
Suite 1100
Boston, MA 02110
Tel: (617) 737-0040

Civil Engineer
Vernessa Hansen Bradlin, Inc.
99 High Street - 10th Floor
Boston, MA 02110
Tel: (617) 728-7777

MEP & Fire Protection
R.W. Sullivan Engineering
629 Main Street - Suite 203
Boston, MA 02129
Tel: (617) 523-8227

Building Enclosures
Simpson Gumpertz & Heger
480 Totten Pond Road
Waltham, MA 02451
Tel: (781) 907-8000

Geotechnical Engineer
Haley & Aldrich, Inc.
70 Blanchard Road, Suite 204
Burlington, MA 01803
Tel: (617) 696-1400

Life Safety
Cooke Reed
154 Turnpike Road - Suite 200
Southborough, MA 01772
Tel: (617) 500-7633

Landscape Architect
Shadley Associates
1730 Massachusetts Avenue
Leavington, MA 02420
Tel: (818) 652-8809

Parking Garage

Garage Structural Engineer
Simon Design Engineering
49 Walnut Park Building #2
Wellesley, MA 02481
Tel: (781) 237-2226

Garage MEP & FP
e3 Engineers
137A Lewis Wharf
Boston, MA 02110
Tel: (617) 530-1104

SHEET NOTES

GENERAL NOTES

Date	Description
09/01/2021	CONSTRUCTION DOCUMENTS ISSUANCE

Seal / Signature

IQHQ Alewife Park

Alewife Park - IQHQ

20143

11,7592.000

Description
PLANTING PLAN

Scale

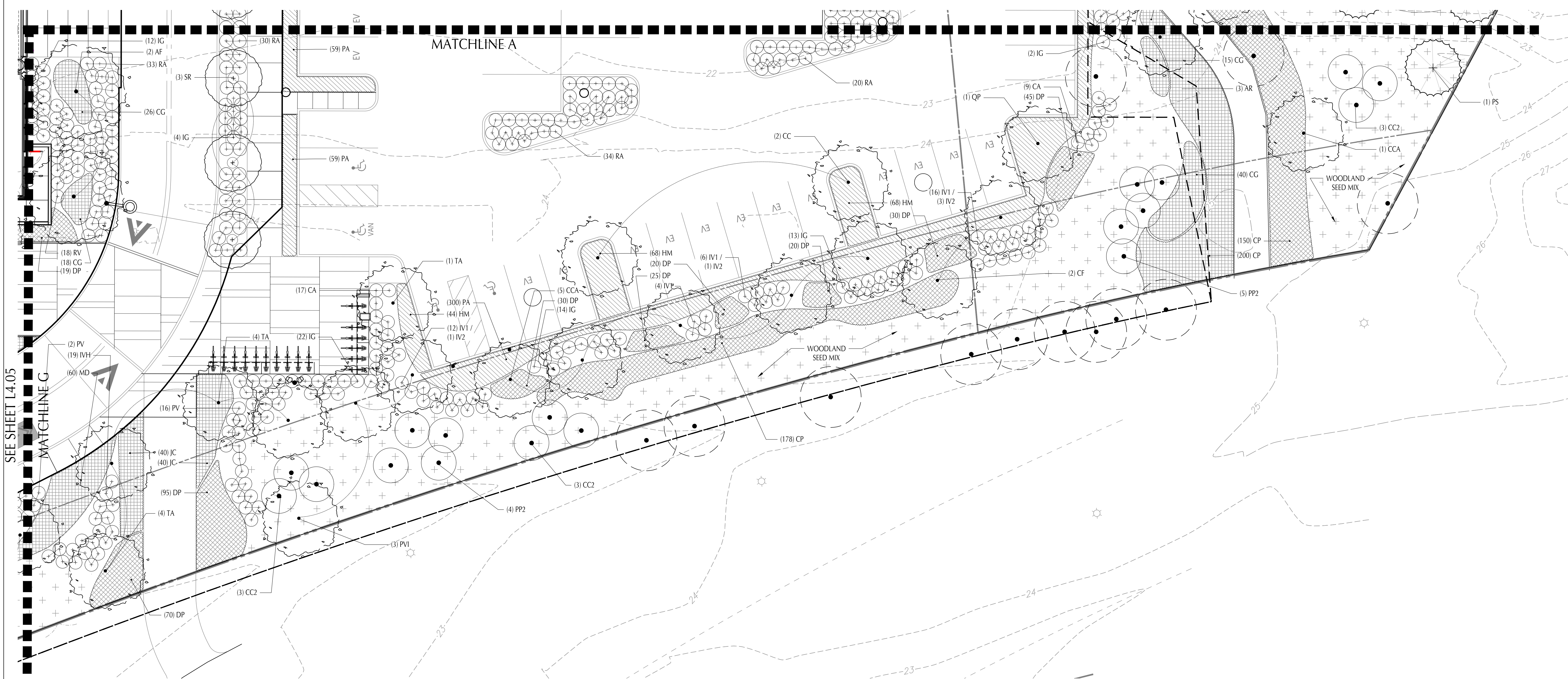
1" = 10'-0"

Building ID

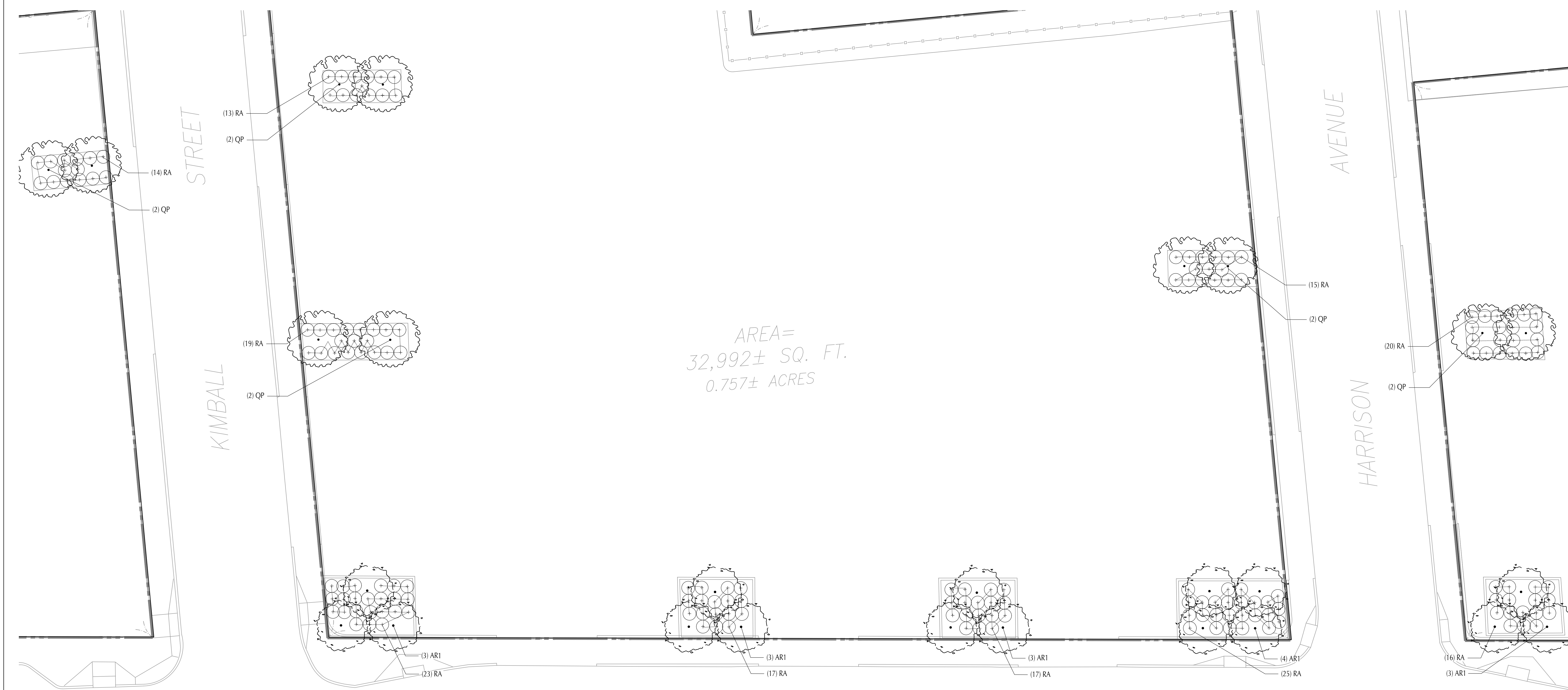
SITE

Sheet

L4.06

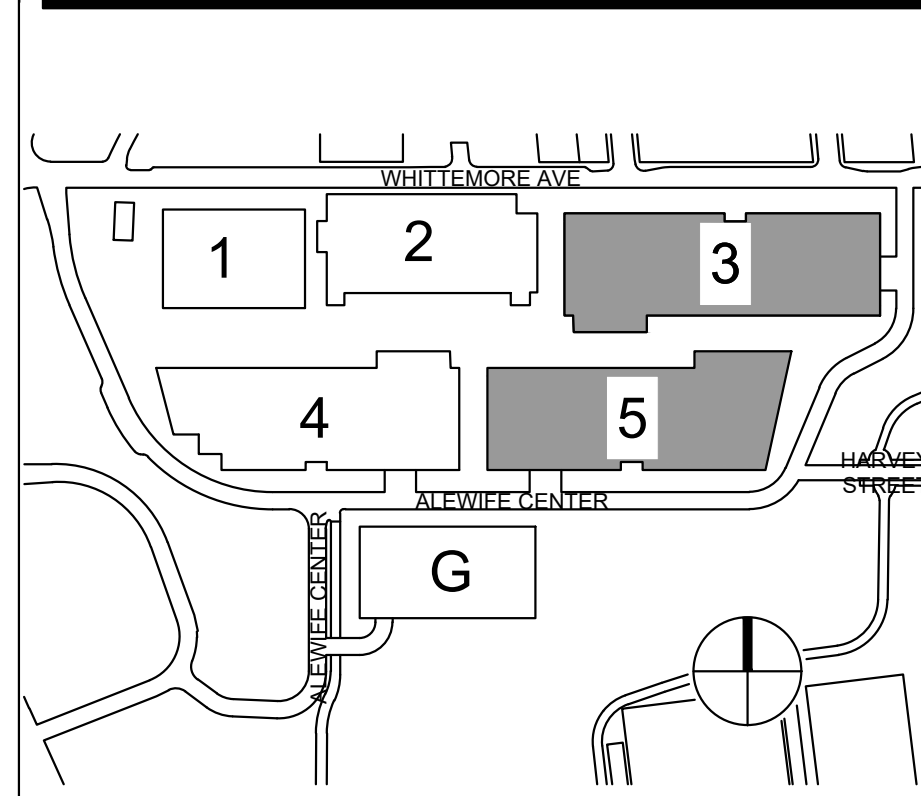


1 PARKING LOT SOUTH
SCALE: 1" = 10'-0"



2 EXISTING PARKING LOT NEW TREES EAST
SCALE: 1" = 10'-0"

KEY PLAN



Date	Description
09/01/2021	CONSTRUCTION DOCUMENTS ISSUANCE

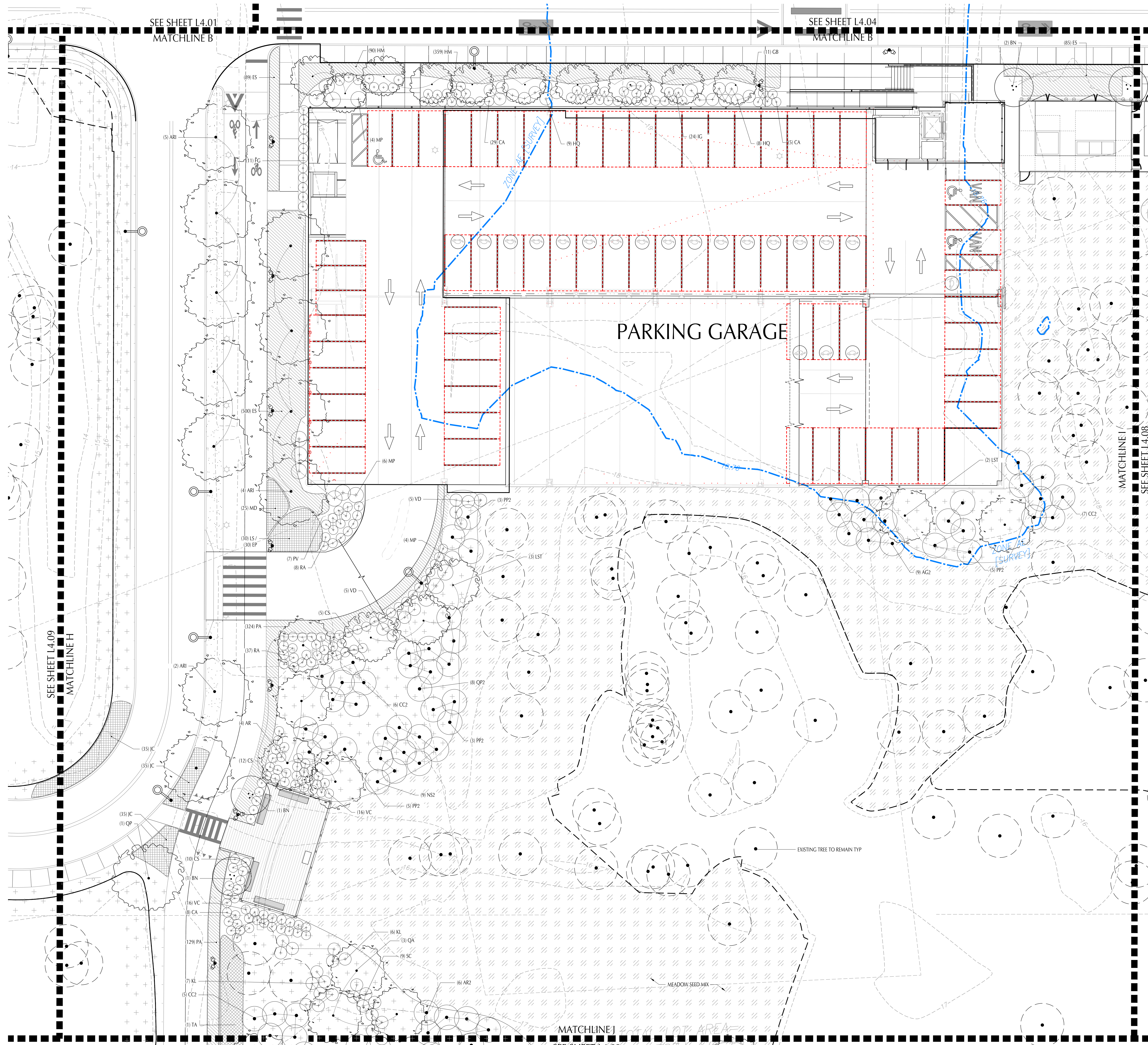
Seal / Signature

IQHQ Alewife Park
Alewife Park - IQHQ

20143
11.7592.000
Description
PLANTING PLAN

Scale
1" = 10'-0"

Building ID | Sheet
SITE | L4.07



1 PARKING GARAGE
SCALE: 1" = 10'-0"

09/20/2020 6:43 PM B:\901011.7592.000 - Alewife Park - IQHQ\alewife - 11.7592.000 - Alewife Park_2021.rvt

Date	Description
09/01/2021	CONSTRUCTION DOCUMENTS ISSUANCE

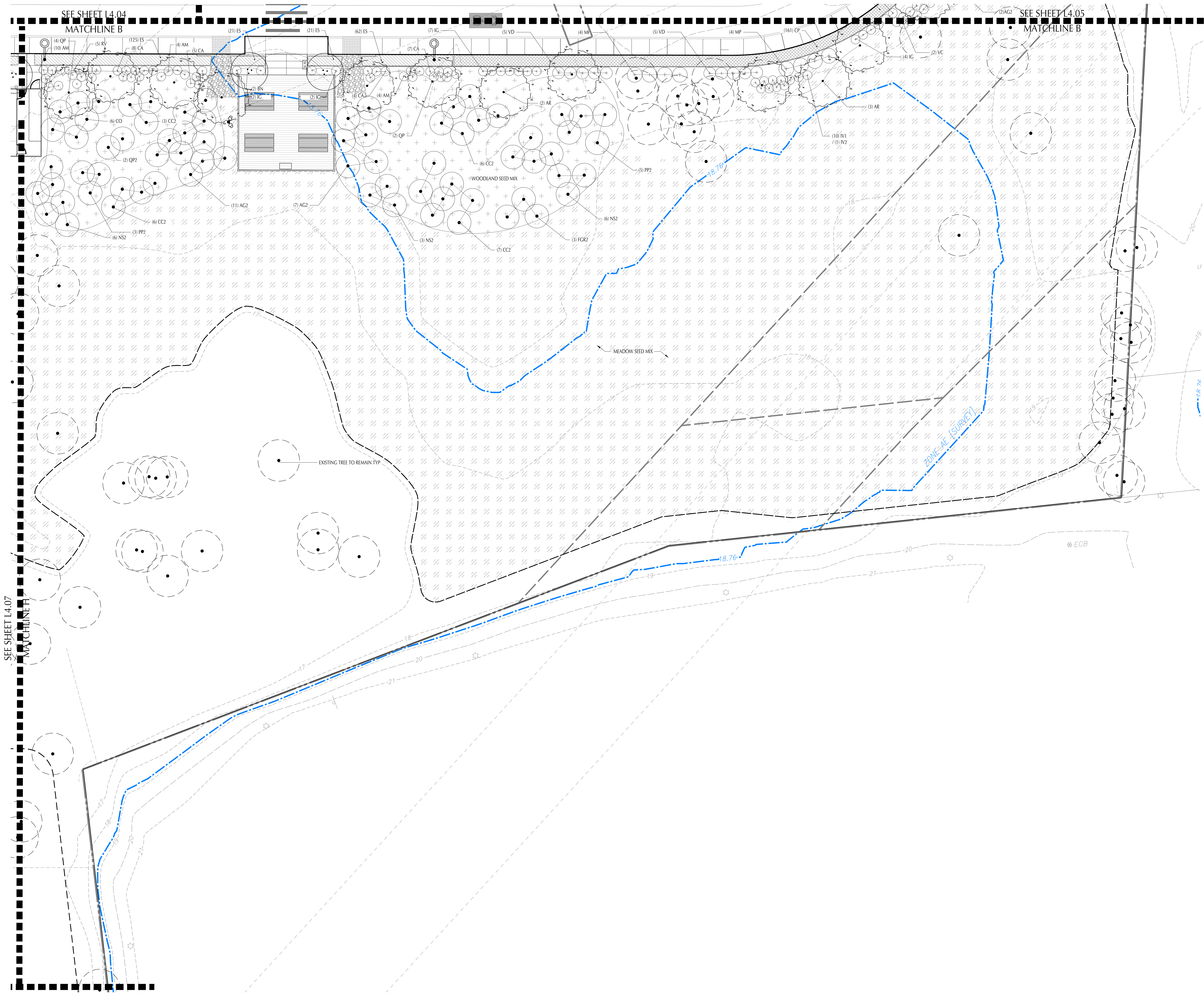
Seal / Signature

IQHQ Alewife Park
Alewife Park - IQHQ

20143
11.7592.000
Description
PLANTING PLAN

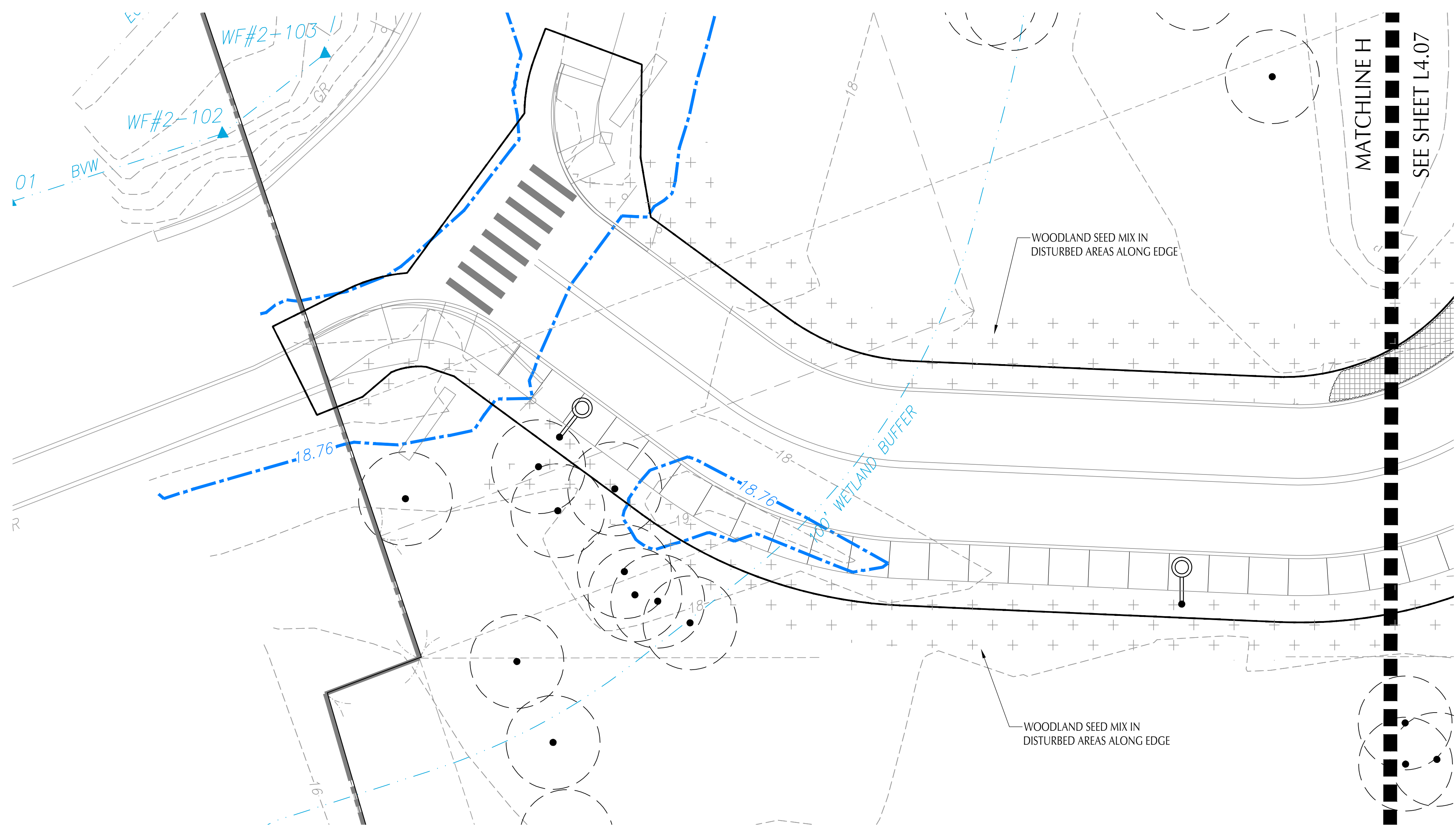
Scale
1" = 10'-0"

Building ID | Sheet
SITE | L4.08



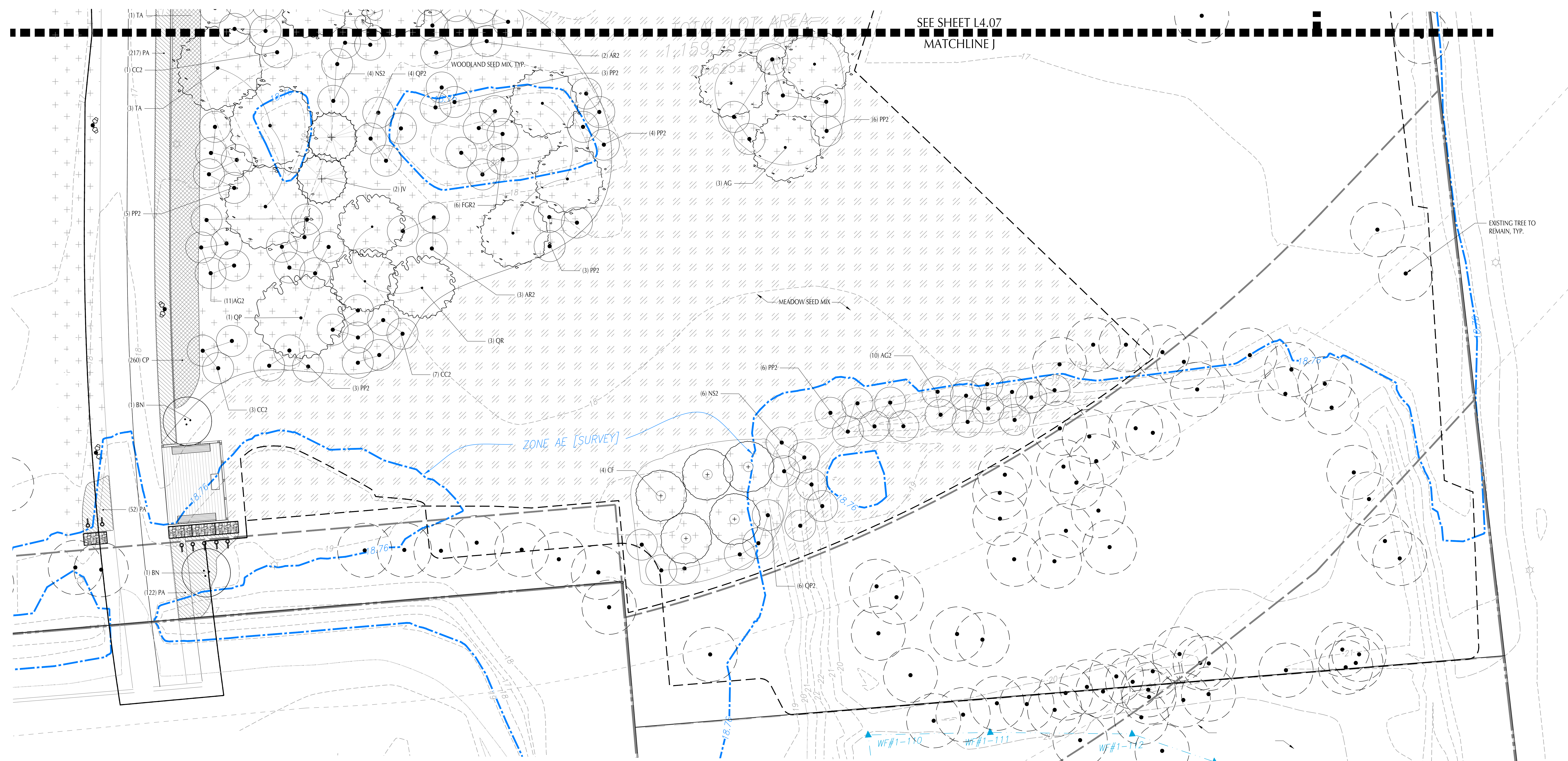
SEE SHEET L4.07
MATCHLINE H

1 PARKING GARAGE EAST
SCALE: 1" = 10'-0"



2 SOUTHWEST CONNECTOR DRIVE - WEST OF PARKING GARAGE

SCALE: 1" = 10'-0"



1 SOUTH SITE ENTRY - SOUTH OF PARKING GARAGE

SCALE: 1" = 10'-0"

Date	Description
09/01/2021	CONSTRUCTION DOCUMENTS ISSUANCE

Seal / Signature

IQHQ Alewife Park
Alewife Park - IQHQ
20143
11.7592.000
Description
PLANTING PLAN

Scale
1" = 10'-0"

Building ID	Sheet
SITE	L4.09